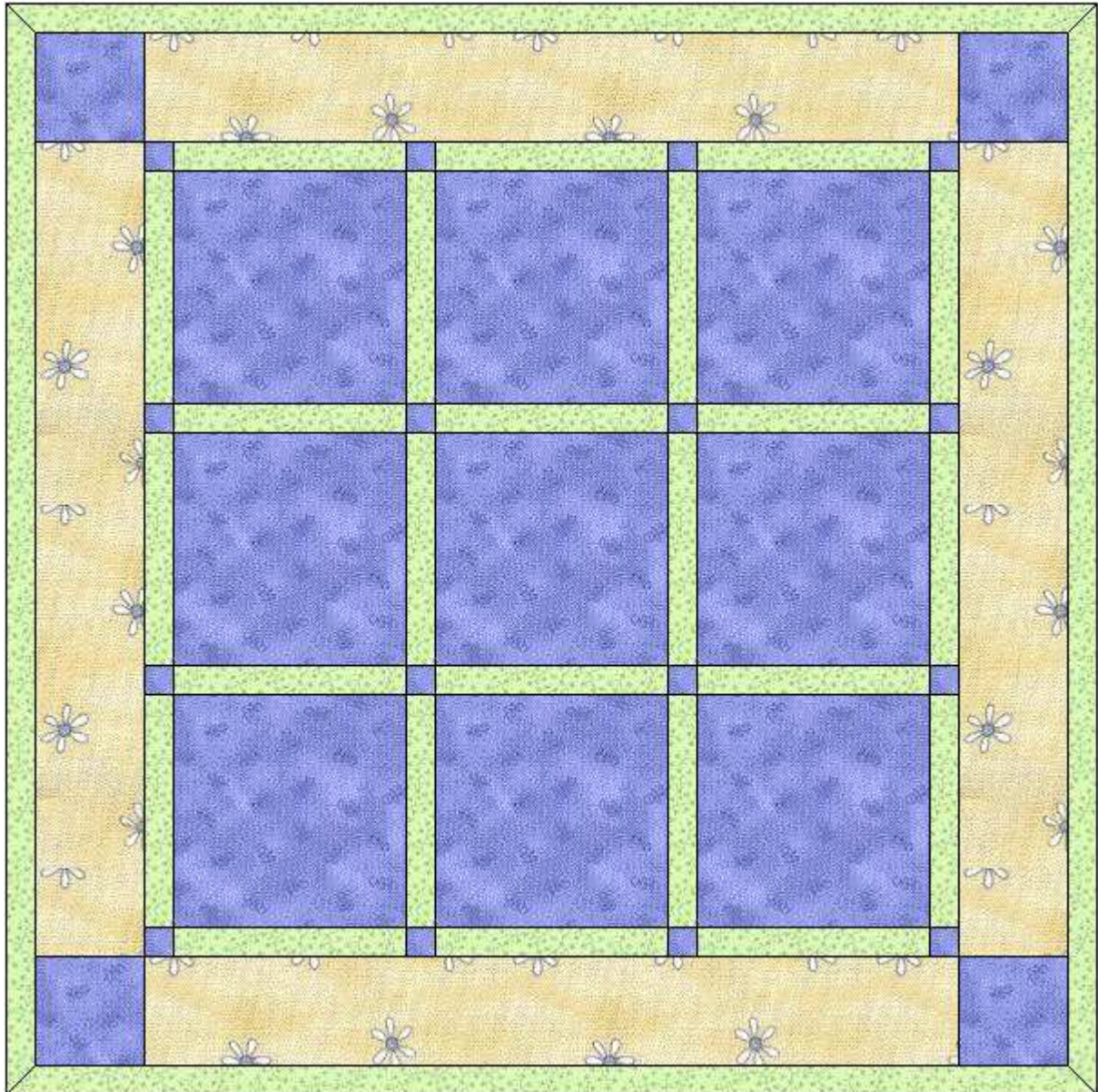


Block of the Month: March - November 2006

"Garden Party"

© Helen Cairns 2006



"Garden Party" - Setting Arrangement

"Garden Party" is the 2006 PNQ Online *Block of the Month* project. This special wall-hanging consists of a **delightful** collection of nine nature-inspired appliqué blocks. The garden designs include a range of cottage-garden flowers, insects and garden tools, all "blessed" by a very cute *garden angel*. The monthly patterns for this project will be emailed directly to PNQ Online subscribers during the first week of each month between March and November, 2006.

Block of the Month: March – November 2006

"Garden Party"

© Helen Cairns 2006

Finished Quilt Size: 38" x 38"

REQUIREMENTS: 100% cotton fabric is recommended. Generous quantities have been allowed to cover squaring up the fabric after washing. Any surplus fabric can also be used in the appliqué designs.

- **Background:** 80cm or 32" *blue* homespun or tone-on-tone.
- **Scraps** in a variety of colors and prints, suitable for a garden theme.
- **Sashing, Final Border and Binding:** 60cm or 24" pale green fabric, plain, small print or tone-on-tone.
- **Main Border:** 50cm or 20" *garden print* fabric.
- **Backing and Wadding:** 100cm x 100cm or 40" x 40" for each.
- **Buttons** to embellish the appliqué designs

GENERAL INSTRUCTIONS

- **Read all instructions** prior to commencing the project.
- *Prepare all fabric* by washing and pressing
- $\frac{1}{4}$ " seam allowance is included in all cutting measurements
- Complete this project using "naïve appliqué" or *blanket stitch* for a country effect.

CUTTING AND PREPARATION

Appliqué: Select fabrics from your variety of scraps to create the appliqué designs. Cut pattern pieces as per "pattern sheet". Follow the *fusible appliqué* instructions below.

Background: Cut 9 blue squares, 9" x 9". These will be trimmed after completion of the appliqué. To minimize wastage, cut 4 squares across the width of the fabric and use the remaining fabric for the corner squares in the sashing and border.

Sashing: From the green fabric, cut 24 pieces - $1\frac{1}{2}$ " x $8\frac{1}{2}$ " and 16 squares - $1\frac{1}{2}$ " x $1\frac{1}{2}$ ".

Border: Cut 2 pieces $4\frac{1}{2}$ " x $28\frac{1}{2}$ " for the side border.
Cut 2 pieces $4\frac{1}{2}$ " x $36\frac{1}{2}$ " for the top and bottom border.

Binding: Use the same fabric as for the final border.
Cut 4 x 2" strips across the width of the fabric.

Backing: Cut a $38\frac{1}{2}$ " x $38\frac{1}{2}$ " piece.

Wadding: Cut a $38\frac{1}{2}$ " x $33\frac{1}{2}$ " piece.

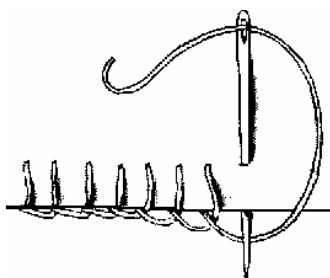
Block of the Month: March - November 2006

"Garden Party"

© Helen Cairns 2006

Fusible Appliqué:

- Place the fusible webbing (**paper side up**) over the pattern pieces.
- Trace each pattern piece the required number of times.
- **Remember** that a reverse image results from all the traced pieces. For symmetrical pieces this is not a problem. For other images, the design has already been reversed for you convenience. This reverse image that will revert to the correct image once ironed onto the fabric. A "light-box" is suggested to get a clear image for tracing.
- Once pieces are traced onto the fusible webbing, roughly cut around each shape. **DO NOT cut on the drawn line!**
- Using a medium/hot **DRY** iron, press the fusible webbing (paper side up) onto the **WRONG** side of your chosen fabrics.
- Using small, sharp scissors cut out the shape exactly on the drawn line. Take care when handling the fabric to avoid fraying the edges.
- Carefully peel the paper backing from the pattern piece. A fine layer of adhesive will remain on the fabric.
- Using the "master pattern" as a guide, place the pieces into position on an appliqué mat. A light-box is also useful here.
- Gently remove the design from the appliqué mat, position onto your background fabric and press. This will permanently fuse the design into place.
- (If you do not have an appliqué mat, you can position and press pieces directly onto your background fabric but take care because you must get it right the first time.)
- "Blanket Stitch" - select a *stranded cotton* embroidery thread to match the colour of the shape being appliquéd. For small shapes use one strand of embroidery thread and for larger shapes use two strands of thread.



Block of the Month: March - November 2006

"Garden Party"

© Helen Cairns 2006

APPLIQUE BLOCKS

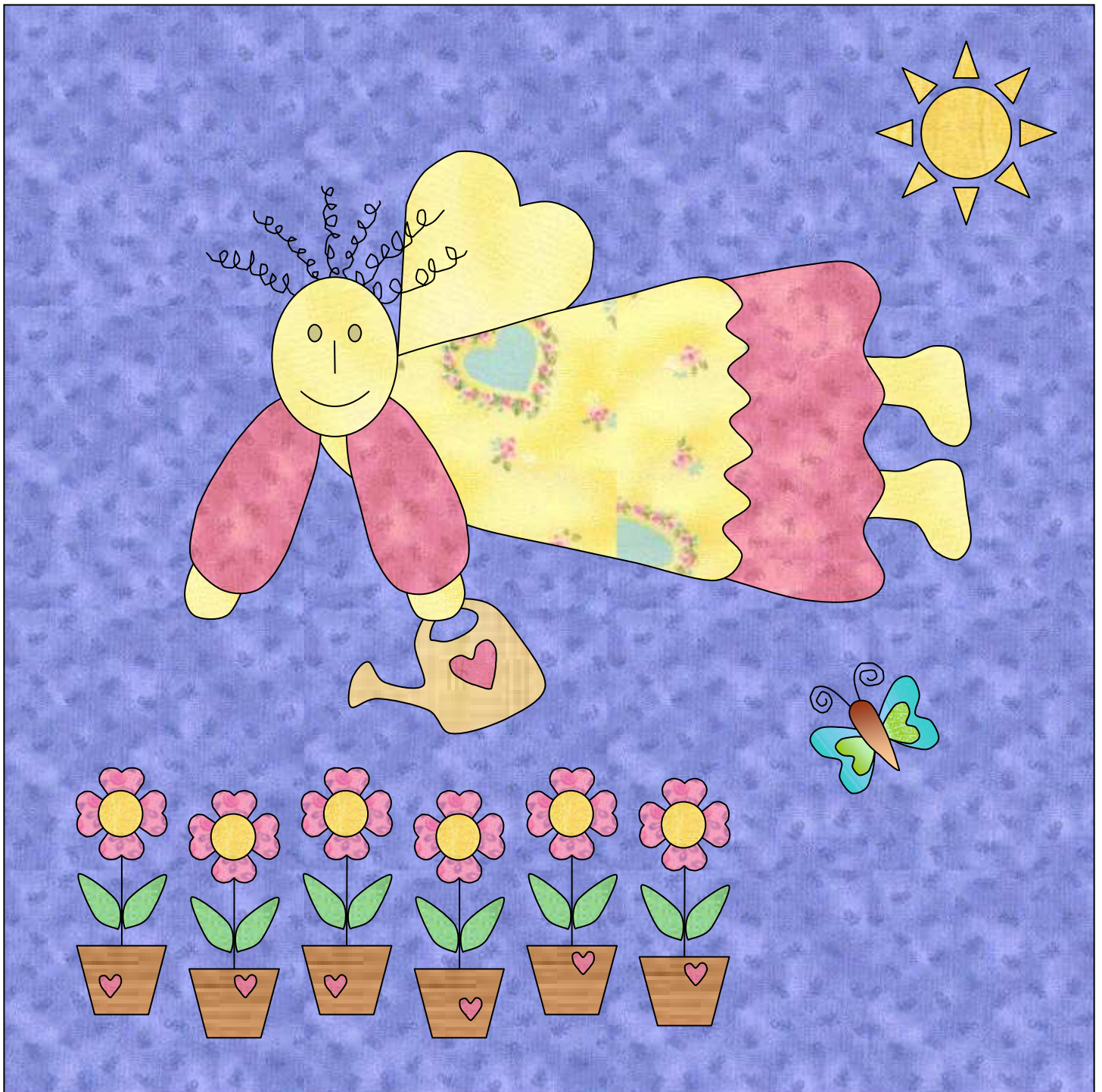
There are **9 appliqué designs** in this wall hanging. Over the next 9 months, the patterns will be made available for each of the 9 blocks in the *"Garden Party"* series. Select fabrics to suit the pieces and prepare as explained in the section on fusible appliqué.

Each of the blocks will be cut down to $8\frac{1}{2}$ " after you have completed the appliqué sewing. Handling the fabric while sewing tends to "fray" the edges slightly, so it's best to allow at least a $\frac{1}{4}$ " on each edge so that blocks can be trimmed before piecing, giving you a nice clean edge to sew with the machine.

With this in mind, be sure to leave a little extra fabric free on each side. You have been instructed to cut blocks 9" square, allowing a $\frac{1}{4}$ " to be trimmed from each side before piecing.

March Block of the Month: "Garden Angel"

© Helen Cairns 2006



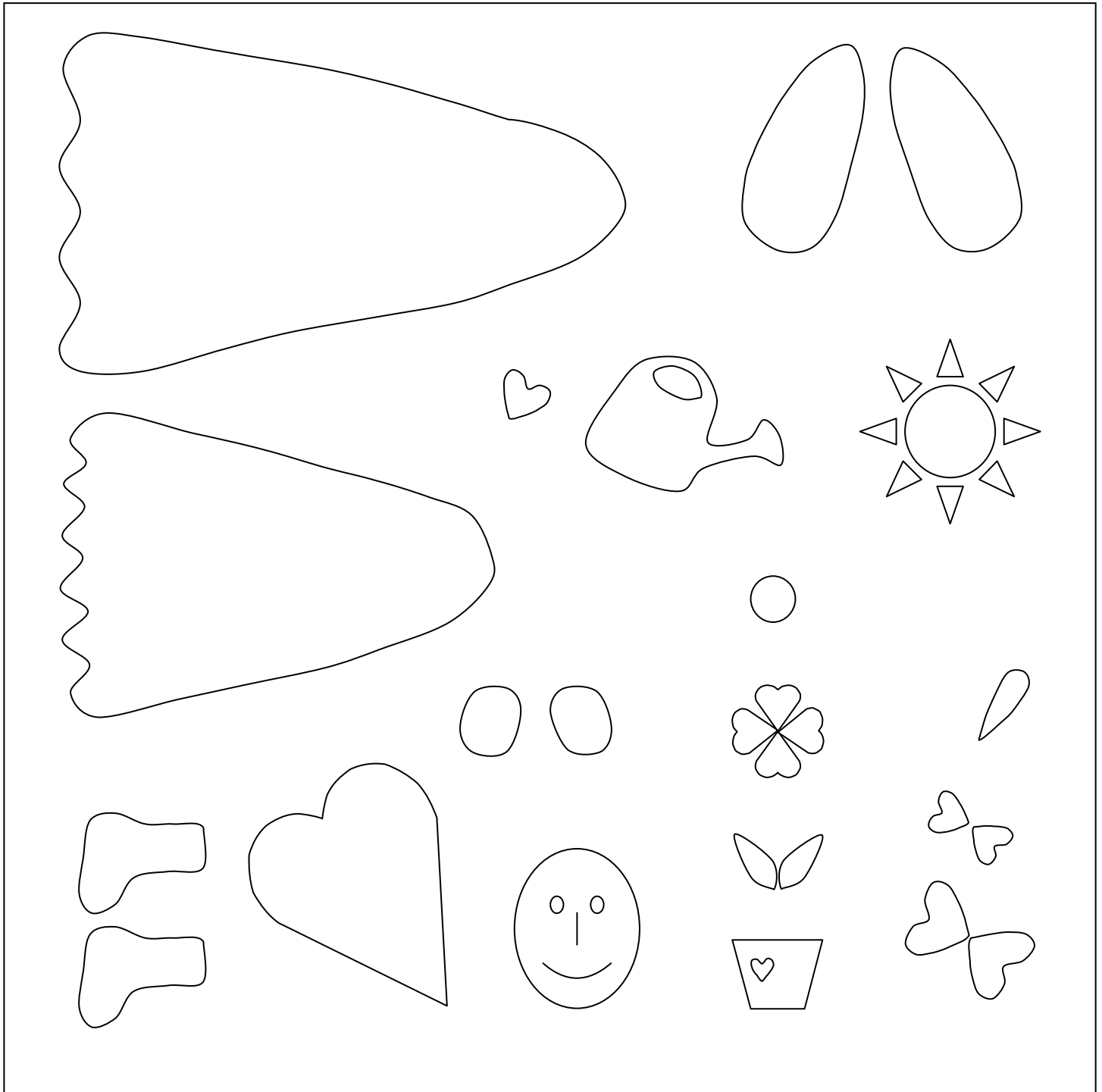
(MASTER PATTERN)

The first design in this delightful "Garden Party" series is the very cute **Garden Angel**.

Read the instructions through carefully *before* commencing this project.

March Block of the Month: "Garden Angel"

© Helen Cairns 2006



(APPLIQUE PATTERN PIECES)

Here are the pattern pieces for the **Garden Angel** block. The pieces have been "**reversed**" so that after you *trace* them onto the fusible web and iron the pieces onto the fabric, the pieces will be **facing the direction shown** in the master pattern.

Please read and follow the instructions below.

Block of the Month: March – November 2006

"Garden Party"

© Helen Cairns 2006

Block One: Garden Angel

Cut out the required pieces for the **Garden Angel** as per the "*fusible appliqué instructions*". I have chosen to place my angel in the *centre block* on the quilt. If you prefer your **angel to face to the right** of the block, you will need to reverse the pattern pieces by using a light box and tracing from the "*reverse side*" of the printed pattern pieces page.

In order to position the pieces accurately onto the background fabric, use a light box and place the master pattern under your appliqué mat so you can see the correct placement. Gently spot press into position then remove the light box and press into place using a **medium/hot DRY iron**.

Now select a stranded cotton embroidery thread to match the color of the shape being appliquéd. Use **one thread** for these small shapes. The **face of the angel can be drawn on** using fabric pens or **embroidered** with either "French" or "colonial" knots for the eyes, *stem stitch* for the mouth and *backstitch* for the nose. You can draw on the hair using fabric pens or attach curly doll's hair.

The butterfly pieces are *very small* so you may wish to purchase a "**button**", an embroidered butterfly or use a butterfly cut from fabric for this purpose. To create a **3-D effect** with your **butterfly's wings**, cut out 2 of each of the butterfly wings and press them together. Blanket stitch around the edge of the pieces and then secure only the inner part of the wings to the block. Your wings will be "*double sided*" and your butterfly will appear to be truly *flying*.

You may also like to use **buttons for the flower heads**. Otherwise, ensure you cut each flower as "one" piece and **not** 4 individual petals. Again, the leaves may be prepared as per the raised butterfly wings to give a *3-D effect*. Use stem-stitch to create the stems for the flowers and the butterfly's antennae.

Feel free to add any additional embellishments to the angel's wings and dress to create a truly unique block.

May your quilt be blessed by this special angel!